



ILUMINA  
1 ELIZABETH

ILUMINA  
1 ELIZABETH

ILUMINA  
1 ELIZABETH

# ILUMINA

THE BIG GROUP



An expansive space **illuminating**  
in the *heart* of Sydney.







# Welcome to ILUMINA

Perched atop Martin Place Metro station, **ILUMINA** rises as a beacon of innovation and sophistication in Sydney's bustling cityscape. Boasting natural light in every room, this vibrant urban hub embodies the promise of being a place for everyone. **ILUMINA**, situated across Levels 2, 3, and 4 of 1 Elizabeth St, redefines hospitality, quality and innovation at the city's heart.

The event spaces in **ILUMINA** are equipped with state-of-the-art technology, flexible, built-in high spec audio visual including tracking LED walls, a concert array of sound system, and hybrid-enabled video conferencing facilities – all designed to encourage collaboration and connection.

These areas are perfect for cocktail parties, dinners, conferences, meetings, activations, and launches, facilitating knowledge exchange and networking. Every aspect of **ILUMINA** is thoughtfully crafted.

Every detail is meticulously chosen, from locally sourced, custom-made furniture to custom staff uniforms and a selection of fine crockery, cutlery, and glassware.

Key features of **ILUMINA** include a Main Hall, divisible by an automated 'Skyfold' wall, retractable tiered theatre seating, and flexible event spaces that offer panoramic views of Chifley Square and are bathed in natural light. The venue includes pre-function areas and smaller meeting rooms ideal for training, seminars, or intimate events.







# The ILUMINA Spaces



# Ground and Level 1 Spaces

ILUMINA is conveniently located at **1 Elizabeth Street, Sydney**, with entry via the Ground Level. From here, guests can access **direct lift or escalator transport to Level 1**, where the venue entrance is located.

Upon arrival at Level 1, guests will be warmly welcomed at the **event registration desk**, ensuring a seamless start to their ILUMINA experience.





# Level 2 Capacities

## EVENT STYLE

- Breakout rooms
- Team meetings
- Boardroom meetings
- Workshops

For video conferencing maximum capacities differ.



Castlereagh Room 2.01  
90M<sup>2</sup>

Cocktail: 50
Theatre: 50
Banquet: 50
Cabaret: 40
Cluster: 40
Classroom: 30
Boardroom: 24
U-Shape: 18



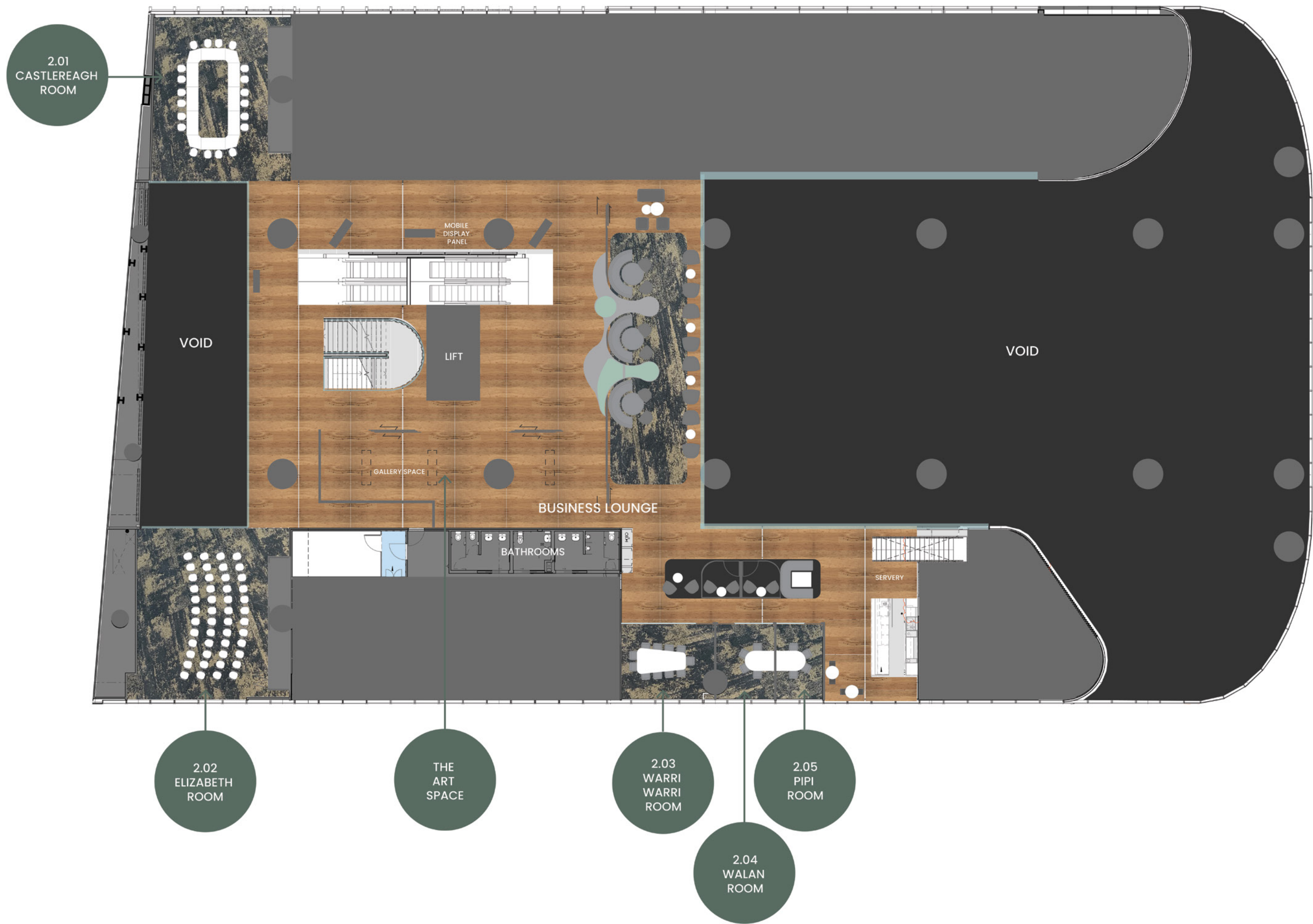
Elizabeth Room 2.02  
100M<sup>2</sup>

Cocktail: 50
Theatre: 50
Banquet: 50
Cabaret: 40
Cluster: 40
Classroom: 30
Boardroom: 24
U-Shape: 18



# Level 2 Floorplan

Take a virtual tour



\*Rooms 2.03 – 2.05 are subject to availability and on request only



# Level 3 Spaces



**Main Hall**

ILUMINA, a versatile event space with double floor ceiling height, features a contemporary setting, state-of-the-art technology, natural light and curated furnishings.



**North Hall**

Divided by the Skyfold wall, ILUMINA’s North Hall, perfect for professional networking dinners, and cocktail parties, is purpose built for the conference and corporate event market.



**Central Hall**

The Central Hall features a unique, retractable 168-seat tiered theatre, easily integrated and equipped with the latest presentation technology.



# Level 3 Spaces



## Pre-function Level 3

Enjoy welcome drinks, cloak and register guests prior to your event in our pre-function areas. Featuring an impressive bar, programmable coloured lights and digital screens throughout to customise each event.



## Green Room

The Green Room is located on level 3. Features include screen with live feed to stage, inhouse speakers, fridge and catering space and an ensuite with shower.



# Level 3 Capacities

## EVENT STYLE

- Cocktail party
- Dinner
- Meeting
- Conference
- Brand activation
- Product launch
- Charity Gala
- Exhibition

*\*Capacity of 1200 guests  
when using levels 2, 3 and 4*

### Main Hall 869M²

Cocktail: 800
Theatre: 740
Banquet no stage: 560
Banquet with stage: 540
Banquet with dancefloor: 500
Cabaret: 432

### Pre Function space 544M²

Cocktail: 450
---------------

### North Hall 519M²

Cocktail: 500
Theatre: 400
Banquet no stage: 300
Banquet with stage: 260
Banquet with dancefloor: 220
Cabaret: 208

### Central Hall 350M²

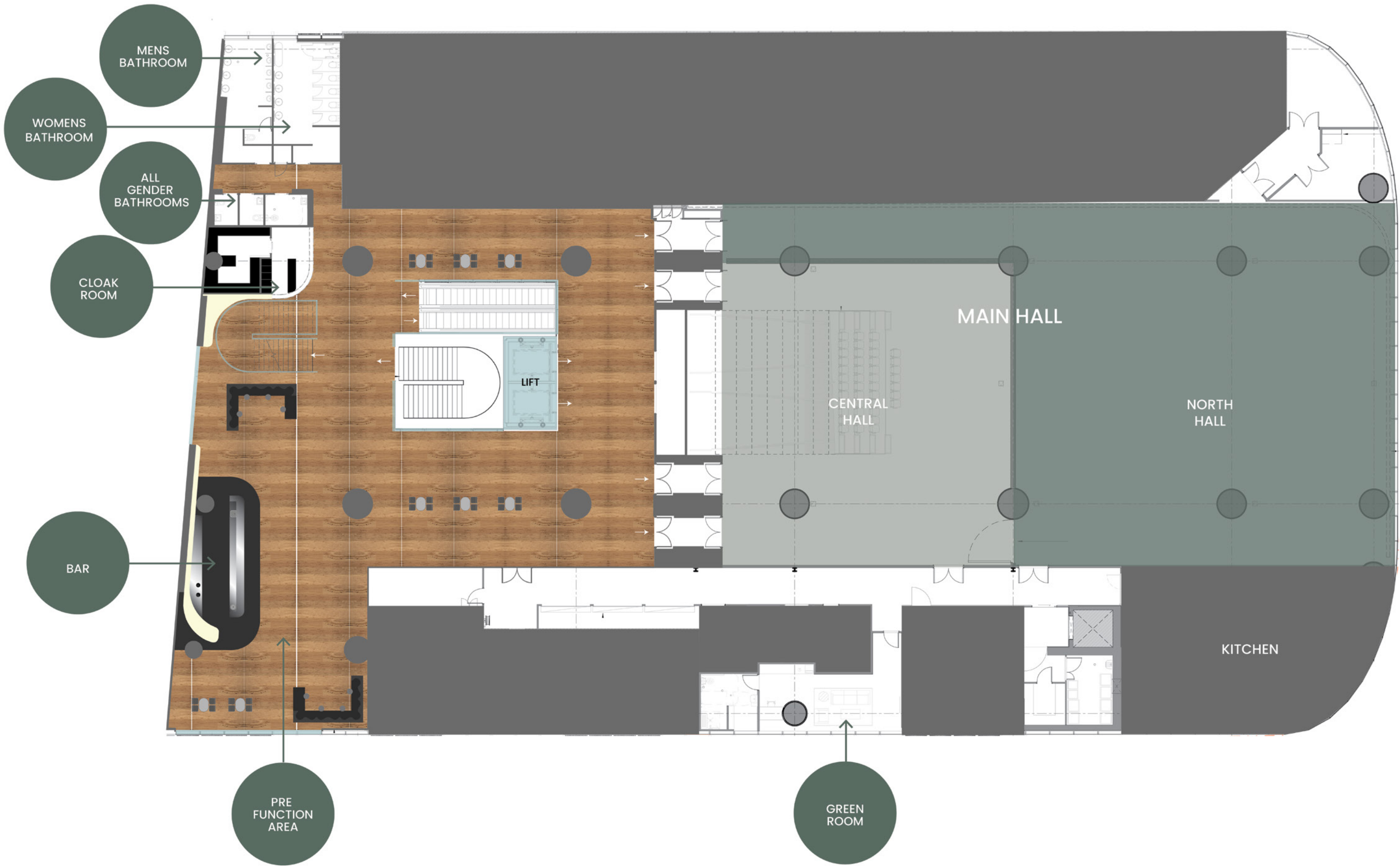
Cocktail: 300
Theatre: 207 <i>(with retractable tiered seating)</i>
Theatre: 225 <i>(without retractable tiered seating)</i>
Banquet no stage: 210
Banquet with stage: 190
Banquet with dancefloor: 150
Cabaret: 160



# Level 3 Floorplan

Take a virtual tour

North Hall & Central Hall Divided





# Level 3 Floorplan

Take a virtual tour

Main Hall  
(North Hall & Central Hall Combined)





# Level 4 Capacities

## EVENT STYLE

- Breakout rooms
- Team meetings
- Boardroom meetings
- Workshops

For video conferencing maximum capacities differ.



### Pre-function Level 4

Enjoy welcome drinks, cloak and register guests prior to your event in our pre-function areas located on Levels 3 and 4. Featuring an impressive bar and state-of-the-art furnishings.



### Wirriga Room 4.01 66M²

Cocktail: 30

Theatre: 30

Banquet: 30

Cabaret: 24

Cluster: 18

Classroom: 18

Boardroom: 16

U-Shape: 14



### Buru Room 4.02 98M²

Cocktail: 60

Theatre: 60

Banquet: 50

Cabaret: 40

Cluster: 48

Classroom: 30

Boardroom: 28

U-Shape: 22



# Level 4 Capacities

## EVENT STYLE

- Breakout rooms
- Team meetings
- Boardroom meetings
- Workshops

For video conferencing maximum capacities differ.



Wirriga Room 4.01 and  
Buru Room 4.02  
Combined  
164M²

Cocktail: 80
Theatre: 80
Banquet: 80
Cabaret: 64
Cluster: 80
Classroom: 54
Boardroom: 36
U-Shape: 34



Marion Hall Best  
Room 4.03  
101M²

Cocktail: 60
Theatre: 60
Banquet: 50
Cabaret: 40
Cluster: 40
Classroom: 30
Boardroom: 28
U-Shape: 22



Chifley Room 4.04  
131M²

Cocktail: 100
Theatre: 100
Banquet: 80
Cabaret: 64
Cluster: 64
Classroom: 48
Boardroom: 32
U-Shape: 24



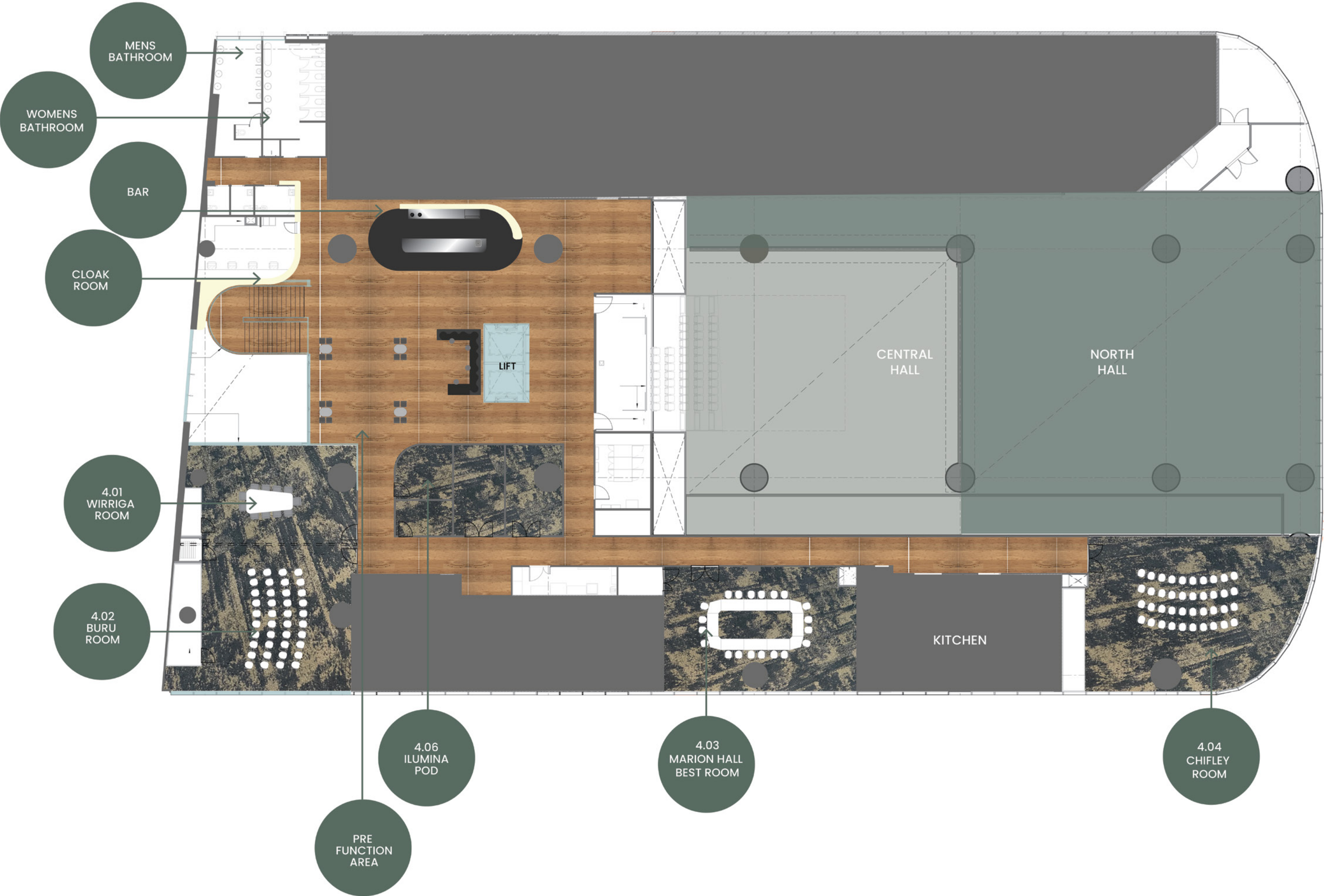
ILUMINA Pod 4.05  
12M²

A fully enclosed tech-enabled pod that can be used for streaming or recording.



# Level 4 Floorplan

Take a virtual tour





Additional information





## Venue Inclusions

- Merano dining chairs by Alez Gufler
- A selection of rectangle and round tables
- Oak square cafe tables
- Modular banquette seating
- Curved portable bar pieces
- Custom sage green tablecloths
- Custom smoke grey tablecloths
- Custom smoke grey napkins
- Grazia & Co polished stainless steel Cocktail tables and stools
- Green fabric armchairs perfect for stage use for panel speakers
- Levels are accessible via escalators and lifts
- Bathrooms on each level
- Custom made stainless steel table number stands
- Custom made stainless steel menu holders
- Robert Welch cutlery
- Sam Gordon Off Grid crockery
- Premium glassware
- Bespoke serveware
- Custom made and designed Farage uniforms for all floor staff and supervisors
- Grey Molo walls
- Background music





# Audio Visual

**Harry  
the hirer®  
Productions**

## AV, Sound, Staging and Lighting

Harry the Hirer are our preferred in-house audio visual supplier at ILUMINA, delivering superior audio visual services, technology and coordination solutions to our client's for their events.

The collaboration between The Big Group and Harry the Hirer brings together our creative vision and their technical expertise to deliver seamless, high-impact event experiences.

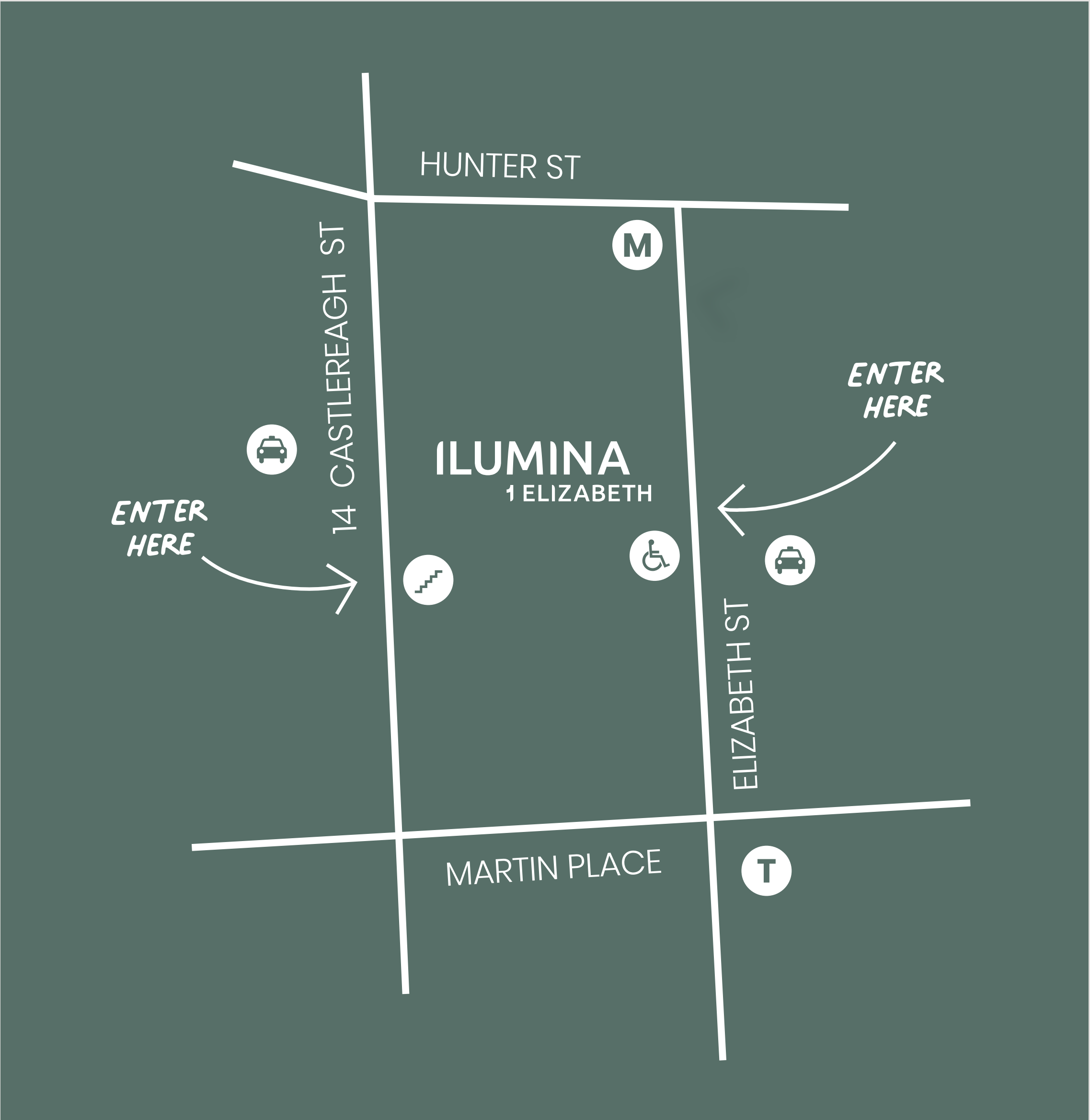
Harry the Hirer are industry leaders in AV production, known for their innovative solutions, cutting-edge technology, and flawless execution. Their team brings years of experience in live events, exhibitions, and custom builds, ensuring that every detail is delivered with precision and professionalism.

Whether it's a large-scale production or an intimate activation, our clients can now benefit from this partnership by working directly with Harry the Hirer's expert AV team. For all AV-related enquiries, please contact the team at:

[iluminaproductions@harrythehirer.com.au](mailto:iluminaproductions@harrythehirer.com.au)

*"ILUMINA is the new go to  
venue for our techie clients!"  
- The company we keep*





# Access Details

## Sydney Metro

The new Sydney Metro connects to the 1 Elizabeth precinct, located conveniently under ILUMINA. Please take the Hunter Street exit when you alight the Metro.

## Train

Martin Place train station is a 1-minute walk  
Wynyard train station is a 5-minute walk

## Parking

For closest parking options, please visit :  
Wilson Parking – [wilsonparking.com.au](http://wilsonparking.com.au)  
Secure Parking – [secureparking.com.au](http://secureparking.com.au)



Driven by a true passion for hospitality, we are committed to delivering Australia's most *creative and memorable* experiences at scale to create a future where **everyone is invited.**

**THE BIG GROUP**



info@iluminasydney.com.au  
iluminasydney.com.au

1 Elizabeth Street,  
Sydney NSW 2000



**THE BIG GROUP | ILUMINA**