

WELCOME TO

ILUMINA

THE BIG GROUP

An *expansive* space **illuminating**
the heart of Sydney.

WELCOME

TO

ILUMINA



Big Business

Welcome to **ILUMINA**

Perched atop Martin Place Metro station, ILUMINA rises as a beacon of innovation and sophistication in Sydney's bustling cityscape. Boasting natural light in every room, this vibrant urban hub embodies the promise of being a place for everyone. ILUMINA, situated across Levels 2, 3, and 4 of 1 Elizabeth St, redefines hospitality, quality and innovation at the city's heart.

The event spaces in ILUMINA are equipped with state-of-the-art technology, flexible, built-in high spec audio visual including tracking LED walls, a concert array of sound system, and hybrid-enabled video conferencing facilities – all designed to encourage collaboration and connection.

These areas are perfect for cocktail parties, dinners, conferences, meetings, activations, and launches, facilitating knowledge exchange and networking. Every aspect of ILUMINA is thoughtfully crafted. Every detail is meticulously chosen, from locally sourced, custom-made furniture to custom staff uniforms and a selection of fine crockery, cutlery, and glassware.

Key features of ILUMINA include a Main Hall, divisible by an automated 'Skyfold' wall, retractable tiered theatre seating, and flexible event spaces that offer panoramic views of Chifley Square and are bathed in natural light. The venue includes pre-function areas and smaller meeting rooms ideal for training, seminars, or intimate events.



Meetings & Incentives

ILUMINA is the ideal space to reward and inspire, perfectly catering to the meetings and incentives market for memorable, impactful corporate events and gatherings.



Grand Celebrations

Collaborating with leading brands and major corporate clients, The Big Group specialise in elevating important occasions to new heights, redefining celebration on a grand scale.



Big Business

The Big Group specialise in creating unique guest experiences for gala events, international conferences, trade shows, and exhibitions, tailoring each event to its specific audience.

CASTLEREAGH STREET

MARTIN PLACE

ILUMINA
1 ELIZABETH

HUNTER STREET

ELIZABETH STREET

ENTER HERE

ILUMINA
1 Elizabeth Street
Sydney NSW 2000

WELCOME

TO

ILUMINA

THE SPACES



Level 2

Floorplan Overview



Level 2 Breakout Rooms *Capacities*

Castlereagh Room 2.01
90sqm

CAPACITY

- Theatre: 50
- Cabaret: 40
- Classroom: 30
- Banquet: 50
- U-Shape: 18
- Cocktail: 50
- Boardroom: 14

Elizabeth Room 2.02
100sqm

CAPACITY

- Theatre: 50
- Cabaret: 40
- Classroom: 30
- Banquet: 50
- U-Shape: 18
- Cocktail: 50

Warri Warri Room 2.03
27sqm

CAPACITY

- Boardroom: 9-11

Walan Room 2.04
and Pipi Room 2.05
14-17sqm

CAPACITY

- Boardroom: 4

The Spaces

For full room capacities, please refer to page 13



MAIN HALL

ILUMINA, a versatile event space with double floor ceiling height, features a contemporary setting, state-of-the-art technology, natural light and curated furnishings.

Max Capacity: 800 cocktail



NORTH HALL

Divided by the Skyfold wall, ILUMINA's North Hall, perfect for professional networking dinners, and cocktail parties, is purpose-built for the conference and corporate event market.

Max Capacity: 500 cocktail



CENTRAL HALL

The Central Hall features a unique, retractable 168- seat tiered theatre, easily integrated and equipped with the latest presentation technology.

Max Capacity: 300 cocktail

The Spaces



PRE-FUNCTION SPACES

Enjoy welcome drinks, cloak and register guests prior to your event in our pre- function areas located on Levels 3 and 4. Featuring an impressive bar and state- of-the-art furnishings.

Max Capacity:

Level 3: 400

Level 4: 200

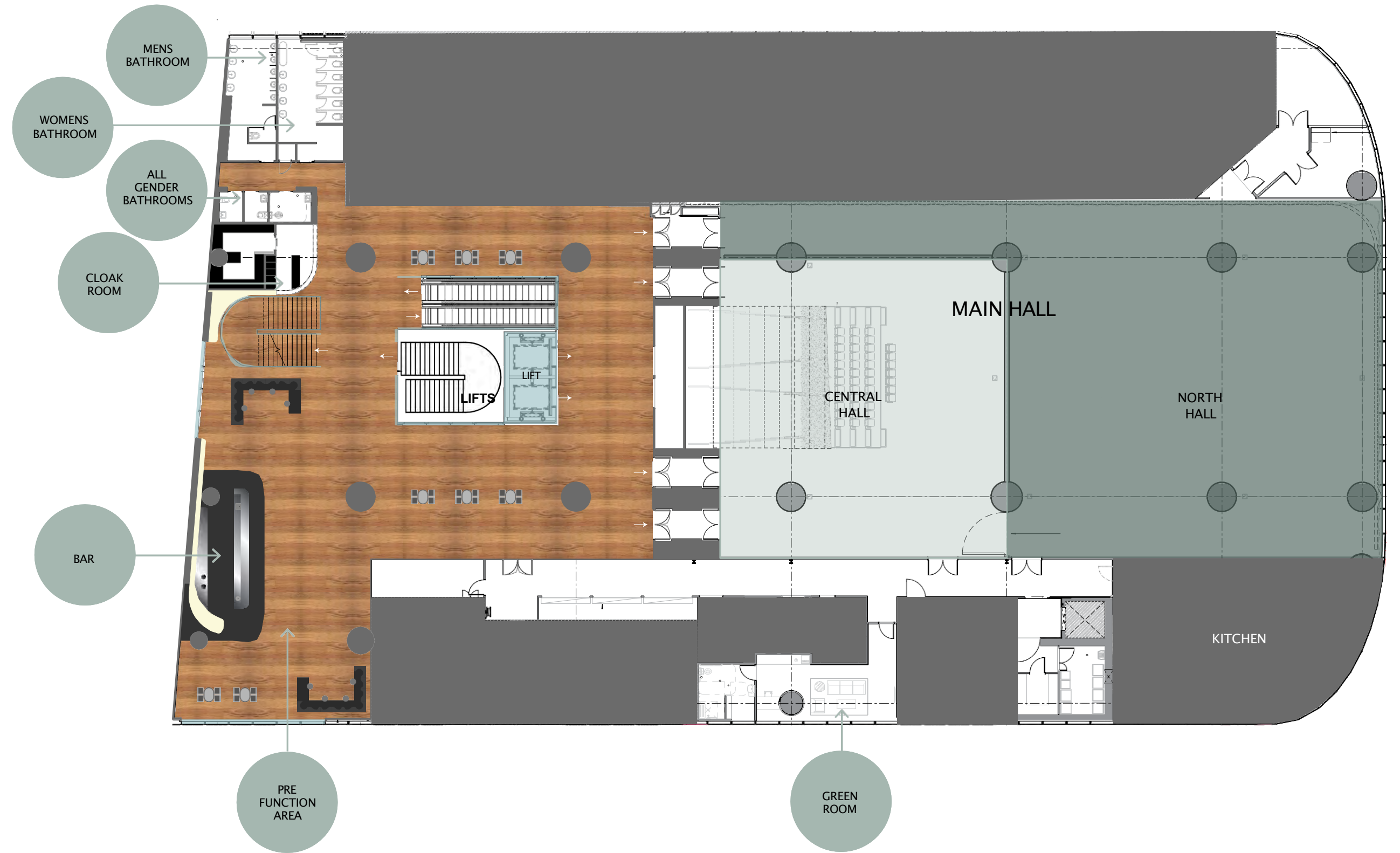


GREEN ROOM

The Green Room is located on level 3. Features include screen with live feed to stage, inhouse speakers, fridge and catering space and an ensuite with shower.

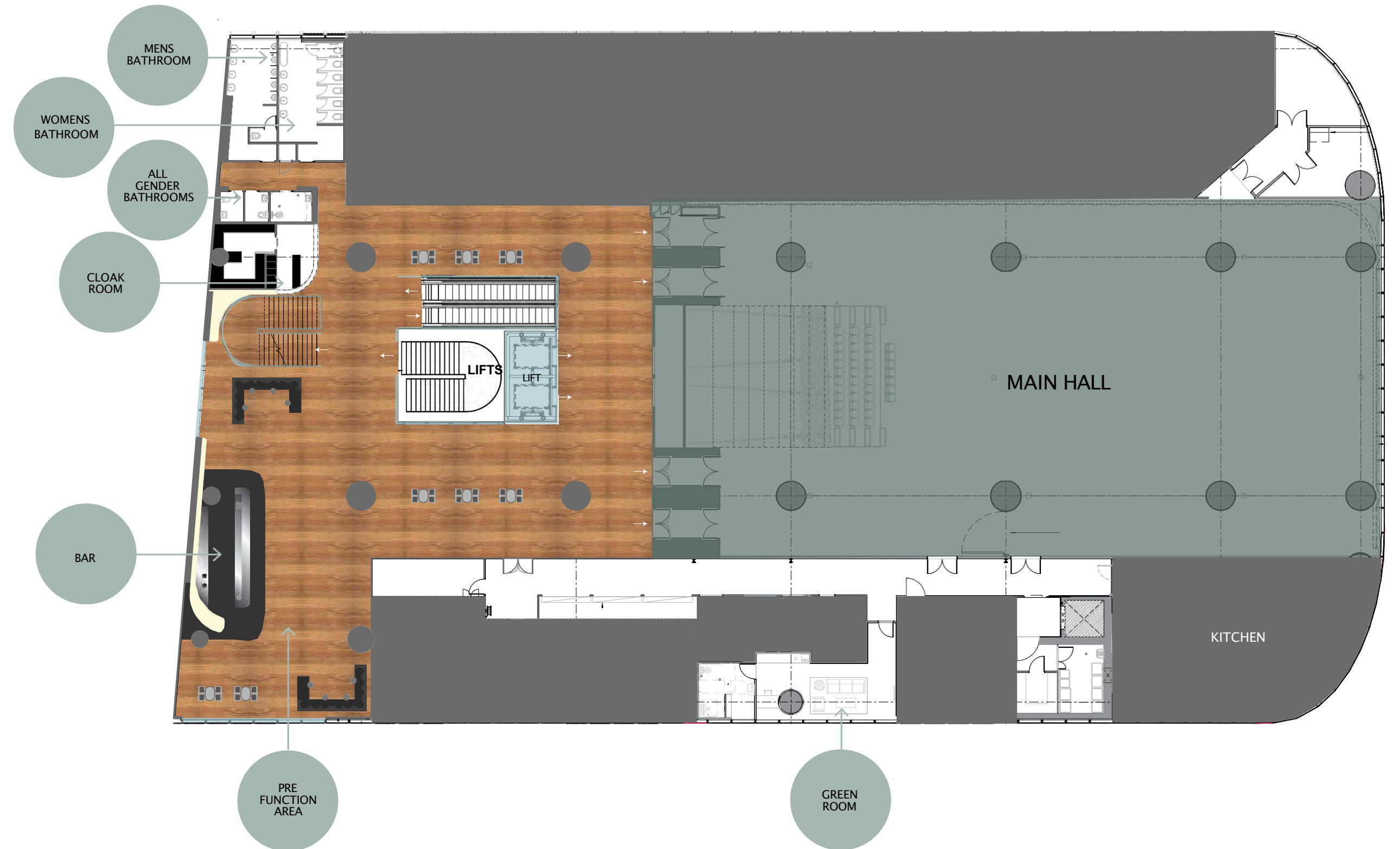
Level 3 Floorplan Overview

Map shows overview of dividing rooms



Level 3 Floorplan Overview

Map shows room at full capacity



Level 3 Breakout Rooms *Capacities*

EVENT STYLE

- Cocktail party
- Dinner
- Meeting
- Conference
- Brand activation
- Product launch
- Charity gala
- Exhibition

**Capacity of 1200 guests
when using both level 3 and 4*

Main Hall
869sqm

CAPACITY

- Banquet: 560
- Banquet with dancefloor:
480 Cabaret: 336
- Cocktail: 800
- Theatre: 700

North Hall
519sqm

CAPACITY

- Banquet: 260
- Banquet with dance floor:
240 Cabaret: 216
- Cocktail: 500
- Theatre: 352

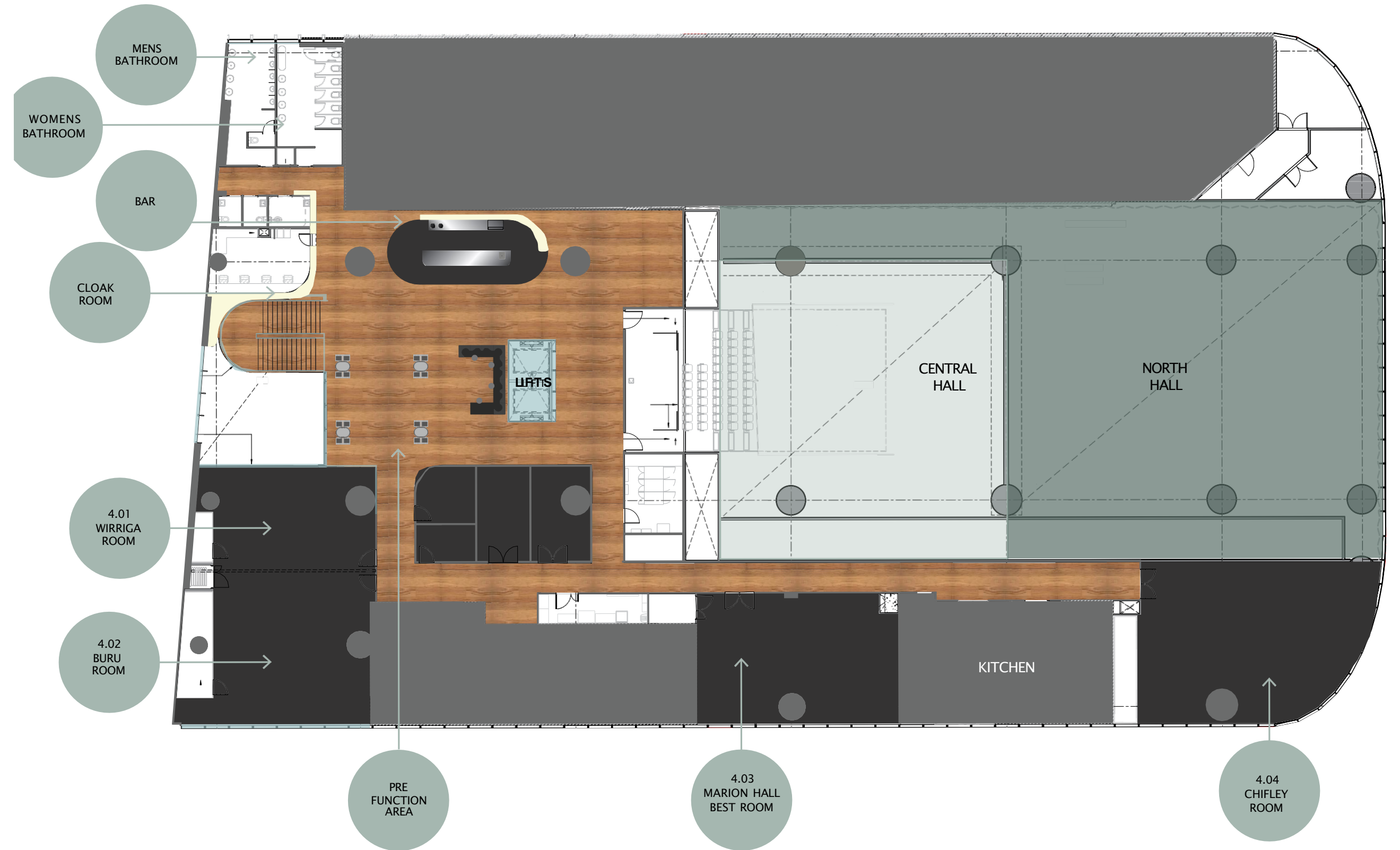
Central Hall
350sqm

CAPACITY

- Banquet: 190
- Banquet with dance floor:
170 Cabaret: 176
- Cocktail: 300
- Theatre: 168
(with retractable tiered seating)
- Theatre: 220
(without retractable tiered
seating)

Level 4

Floorplan Overview



Level 4 Breakout Rooms *Capacities*

Wirriga Room
4.01
66sqm

Buru Room
4.02
98sqm

Wirriga Room
4.01 and
Buru Room
4.02 Combined
164sqm

Marion Hall
Best Room
4.03

Chifley Room
4.04
98sqm

ILUMINA pod
4.06
98sqm

CAPACITY

Theatre: 30
Cabaret: 24
Cluster: 24
Classroom: 18
Banquet: 30
U-Shape: 21
Cocktail: 30

CAPACITY

Theatre: 50
Cabaret: 40
Cluster: 42
Classroom: 18
Banquet: 50
U-Shape: 21
Cocktail: 50

CAPACITY

Theatre: 80
Cabaret: 80
Cluster: 80
Classroom: 63
Banquet: 100
U-Shape: 38
Cocktail: 80

CAPACITY

Theatre: 50
Cabaret: 40
Cluster: 42
Classroom: 30
Banquet: 50
U-Shape: 32
Cocktail: 50

CAPACITY

Theatre: 80
Cabaret: 48
Cluster: 48
Classroom: 35
Banquet: 60
U-Shape: 35
Cocktail: 80

CAPACITY

Pod: 2

WELCOME

TO

ILUMINA

THE MAIN HALL



Package *Inclusions*

- Merano dining chairs by Alez Gufler
- A selection of rectangle and oak round tables
- Oak square cafe tables
- Modular banquette seating
- Curved portable bar pieces
- Custom sage green tablecloths
- Custom smoke grey tablecloths
- Custom smoke grey napkins
- Custom made stainless steel table number stands
- Custom made stainless steel menu holders
- Robert Welch cutlery
- Sam Gordon Off Grid crockery
- Premium glassware
- Bespoke serveware
- Hattie Malloy customised vases
- Anodised silver table lamp centrepieces
- Access to green room and cloaking facilities
- Floor and bar staff
- Background music
- Event Supervisor

Extra Details

AV, Sound, Staging and Lighting

Harry the Hirer are our preferred in-house audio visual supplier at ILUMINA, delivering superior audio visual services, technology and coordination solutions to our client's for their events.

An audio visual technician will be required during your event to manage the in-house equipment. Technician charges apply.

We encourage you to speak directly with an experienced member of Harry The Hirer productions regarding options for audio visual or lighting solutions to enhance your event.



Access Details

Guest Access

Towering above Sydney's most famous pedestrian thoroughfare Martin Place and directly above Martin Place Metro station, 1 Elizabeth is distinguished as a place for everyone. Bringing state of the art office space, The Art Space, dining and hospitality to a truly premium location in the heart of the Sydney CBD. Pedestrians can access the building through the Elizabeth Street and Martin Place train station entrances. Access between floors is by stairs, escalators and lift. Equality of access is provided.

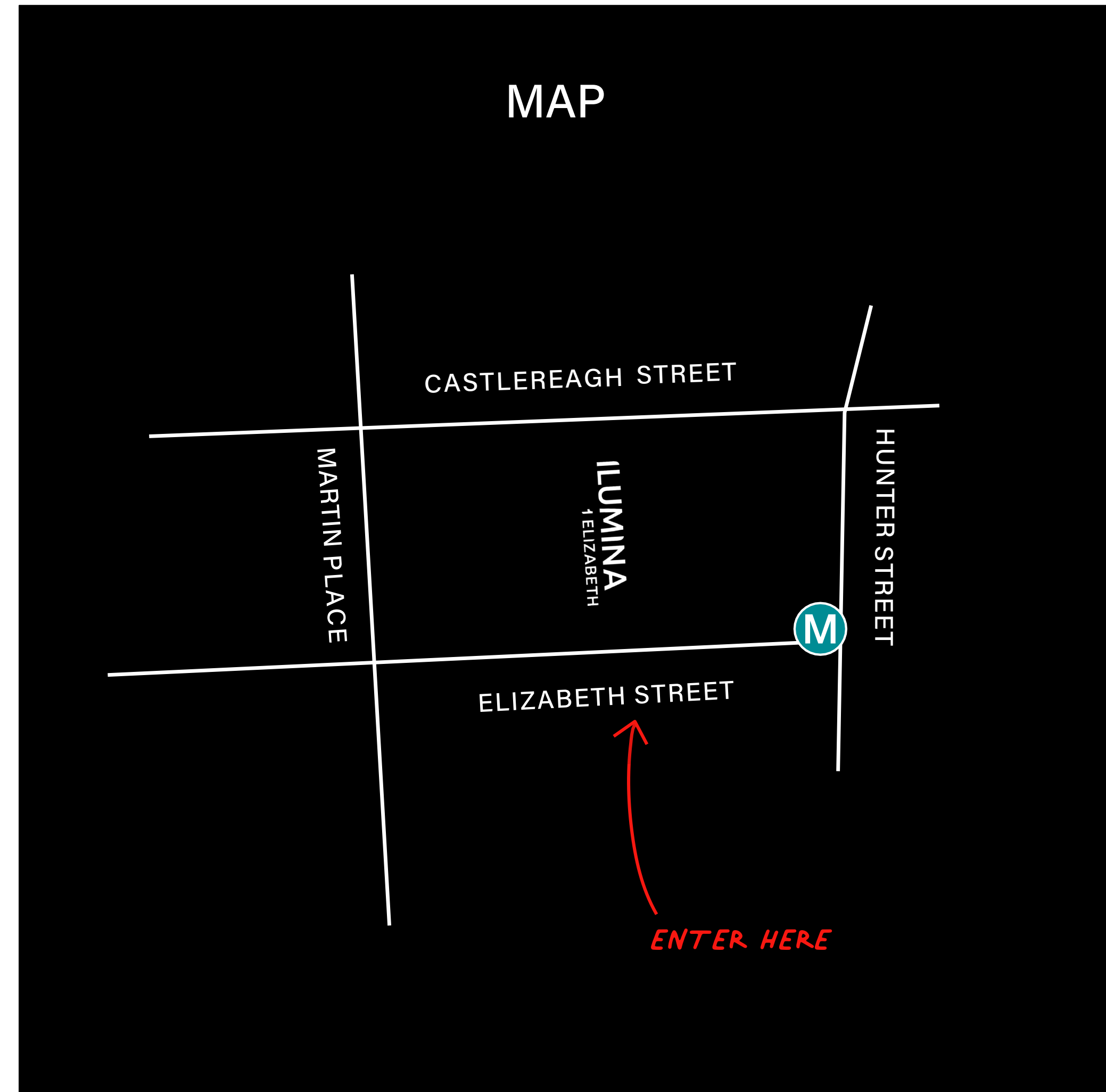
Parking

Public parking options are conveniently located at the following destinations:

- 52 Martin Place, Pitt St (opposite 80 Pitt St)
- Chifley Square, & Hunter Street
- Secure Parking at 1 Martin Place
- Wilson's Parking at 19/29 Martin Place

Public Transport

To access ILUMINA, utilise Martin Place Metro Station, situated beneath the venue with its entrance located beneath 52 Martin Place. Additionally, ILUMINA is a brief 3-minute stroll from St. James Station and a mere 6-minute walk from Wynyard Station.





Driven by a true passion for hospitality, we are committed to delivering Australia's most *creative and memorable* experiences at scale to create a future where *everyone is invited*.

Let's get in touch!

CONTACT US ↓

info@iluminasydney.com.au

iluminasydney.com.au

1 Elizabeth Street,
Sydney NSW 2000

ILUMINA
1 ELIZABETH

THE BIG GROUP